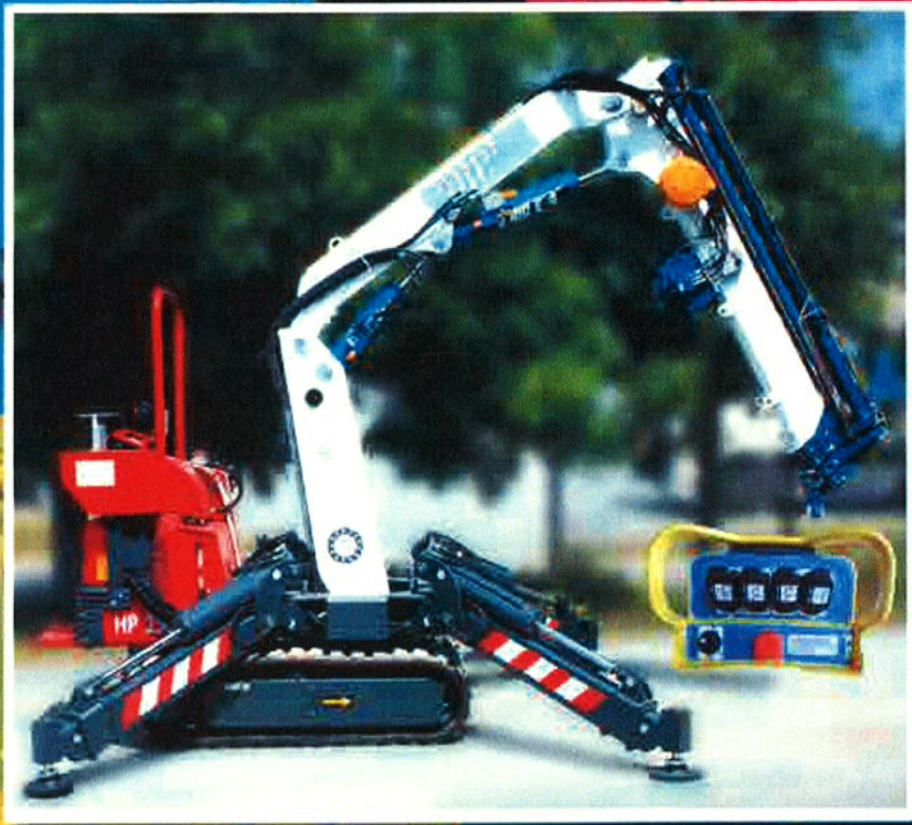


**K e g i o m**  
**l i f t i n g**

**Model 8700-E4**

gru - crane - kran - grue - grúa



CE

Dimensioni Generali - General Dimensions - Dimensions Générales  
Gesamtabmessungen - Dimensiones Generales

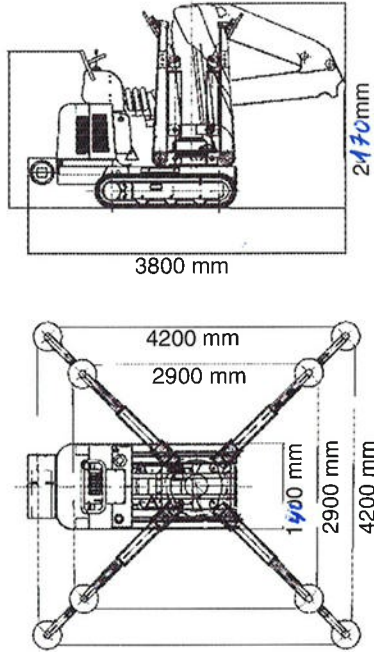


Tabella portata (stabilizzatori tutti estesi)  
Lifting Capacity Chart (outriggers fully extended)  
Tableau de Charge (stabilisateurs étendus max.)  
Hublasttabelle (Abstützung ganz ausgefahren)  
Tablero de Carga (estabilizadores a la máx extensión)

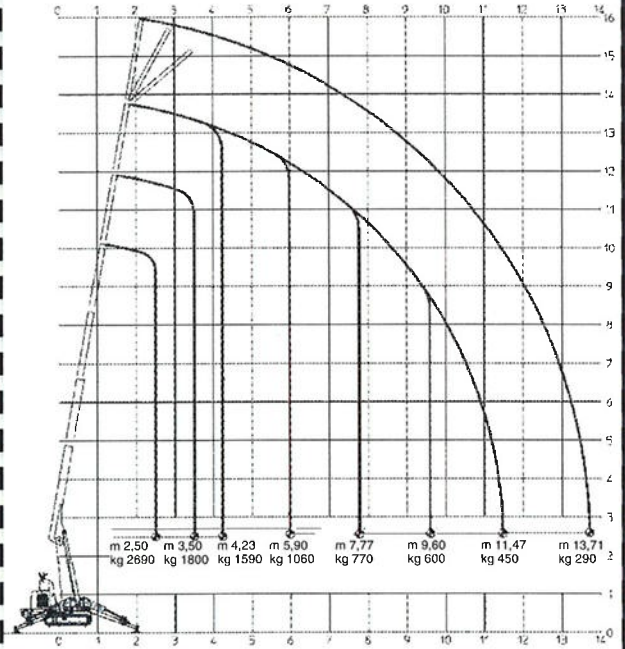
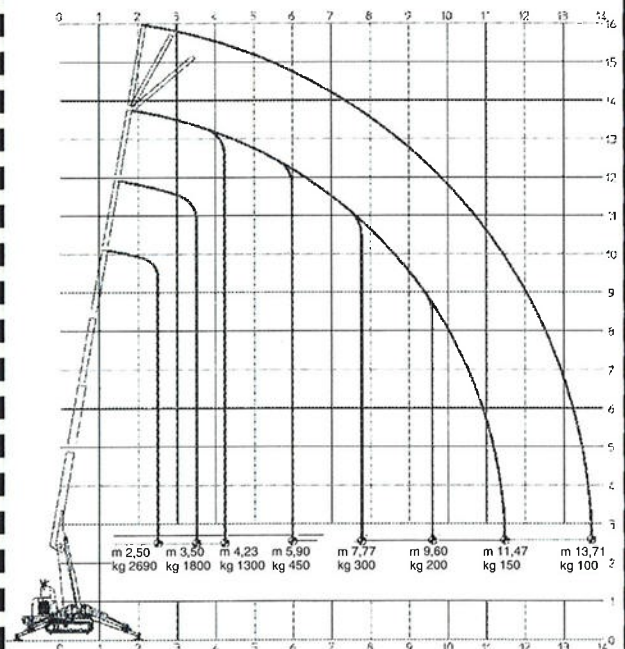


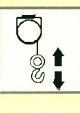







Tabella portata (stabilizzatori min. estesi)  
Lifting Capacity Chart (outriggers min. extended)  
Tableau de Charge (stabilisateurs étendus min.)  
Hublasttabelle (Abstützung min. ausgefahren)  
Tablero de Carga (estabilizadores a la min. extensión)



## DATI TECNICI – TECHNICALS SHEETS – TECHNISCHE DATEN – CARACTERISTIQUES TECHNIQUES – DATOS TECNICOS

					
<b>Motore diesel avviamento elettr.</b>	<b>Motor diesel electric starting</b>	<b>Dieselmotor Elektrostarter</b>	<b>Moteur diesel démarrage électr.</b>	<b>Motor diesel arranque électr.</b>	<b>Yanmar3TNE74 24HPa 3600g/1°</b> 3 cylinders cooled to water
<b>Capacità serbatoio</b>	<b>Tank capacity</b>	<b>Tankkapazität</b>	<b>Capacité réservoir</b>	<b>Capacidad tanque</b>	<b>23 l.</b>
<b>Trazione idrostatica a 2 velocità</b>	<b>Drive system hydrostatics to 2 speeds</b>	<b>Hydrostatischer Antrieb mit 2 Geschwindigkeiten</b>	<b>Transmission hydrostatique à deux vitesses</b>	<b>Tracción hidrostática a 2 velocidades</b>	<b>Km/h 2,6 – 4,7</b>
<b>Angolo di rampa</b>	<b>Ramp angle</b>	<b>Steigungswinkel</b>	<b>Rampe admissible</b>	<b>Rincón de tramo</b>	<b>30°</b>
<b>Cingoli in gomma</b>	<b>Tracks in rubber</b>	<b>Raupenkettan aus Gummi</b>	<b>Chenilles en caoutchouc</b>	<b>Orugas de goma</b>	<b>1850 x 250 x 20 mm.</b>
<b>Portata max</b>	<b>Max lifting</b>	<b>Max.Tragfähigkeit</b>	<b>Capacité maximum</b>	<b>Carga máxima</b>	<b>2690 Kg.</b>
<b>Sbraccio massimo</b>	<b>Max working radius</b>	<b>Max.Ausladung</b>	<b>Longueur de flèche max</b>	<b>Alcance lateral máx.</b>	<b>13,71 m.</b>
<b>Altezza massima</b>	<b>Max.working height</b>	<b>Tragfähigkeit bei max.Ausladung</b>	<b>Hauteur de levage max.</b>	<b>Altura max. de trabajo</b>	<b>16 m.</b>
<b>Fune</b>	<b>Winch rope</b>	<b>Seil</b>	<b>Câble</b>	<b>Cable</b>	<b>55 m. ø 8 mm.</b>
<b>Rotazione</b>	<b>Rotation</b>	<b>Umdrehung</b>	<b>Rotation</b>	<b>Rotación</b>	<b>360°</b>
<b>Stabilizzatori</b>	<b>Outriggers</b>	<b>Abstützung</b>	<b>Stabilisateurs</b>	<b>Estabilizadores</b>	<b>Hydraulic multi position</b>
<b>Pressione al suolo</b>	<b>Max track loading</b>	<b>Bodendruck</b>	<b>Pression au sol</b>	<b>Presión de apoyo</b>	<b>0,40 Kg/cm<sup>2</sup></b>
<b>Comandi elettrico proporzionali</b>	<b>Electricals proportionals control</b>	<b>Elektrische proportionale Steuerung</b>	<b>Commandes électriques proportionnelles</b>	<b>Mandos eléctricos proporcionales</b>	
<b>Limitatore di momento</b>	<b>Automatic limiting device</b>	<b>Automatische Grenzlastregelung</b>	<b>Limiteur de charge</b>	<b>Limitador de momento</b>	<b>Elettronico – Electronic – Elektronisch - Électronique - Electrónico</b>
<b>Pressione max</b>	<b>Max pressure</b>	<b>Max Betriebsdruck</b>	<b>Pression max</b>	<b>Max presión</b>	<b>230 bar</b>
<b>Dimensioni Gru</b>	<b>Dimensions crane</b>	<b>Abmessungen Kran</b>	<b>Dimensions de la grue</b>	<b>Dimensiones grúa</b>	<b>3800 x 1300 x 2050 mm.</b>
<b>Peso</b>	<b>Weight</b>	<b>Gewicht</b>	<b>Poids</b>	<b>Peso</b>	<b>3700 Kg.</b>

### OPTIONALS

	Verricello Winch Treuil Seilwinde Cabrestante		Elettropompa 380 V Electric pump 380 V Pompe électrique 380 V Elektrische pumpe 380 V Bomba eléctrica 380 V		Radiocomando Radio remote control Radiocommande Funkfernsteuerung Radiocomando		Trattamento marino delle gru Marine treatment of the crane Traitement marin de la grue Maritime ausstattung des kranes Tratamiento especial marino de la grúa
	Prolunghe meccaniche Manuals extensions Rallonges manuelles Manuelle verlängerung Alargadores mecánicos		Allargamento idraulico cingoli Widening hydraulic tracks Élargissement hydraulique des chenilles Hydraulisch ausfahrbare raupenkettan Ensanche hidráulicos orugas		Telocomando Cable remote control Télécommande Kabelfernsteuerung Control remoto para cable		Cestello Basket Nacelle Personnenkorb Cesta