



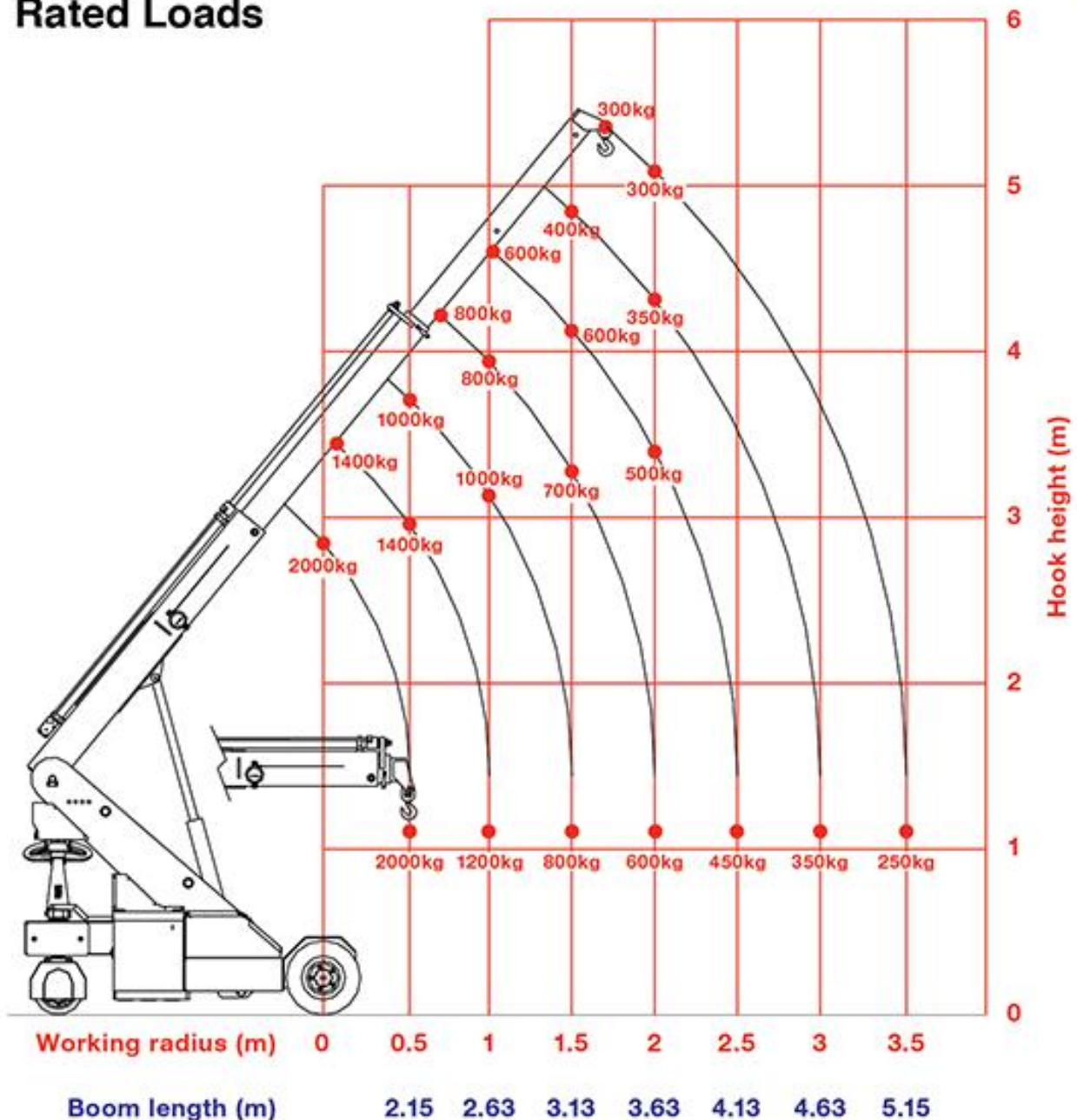
TRANSPORT – GRUE – DEMENAGEMENT INDUSTRIEL – MANUTENTION – LOCATION – ENTREPOSAGE



Grue électrique Galizia G20^e / Capacité 2to

Tableau de Charge : Flèche Principale.

Rated Loads



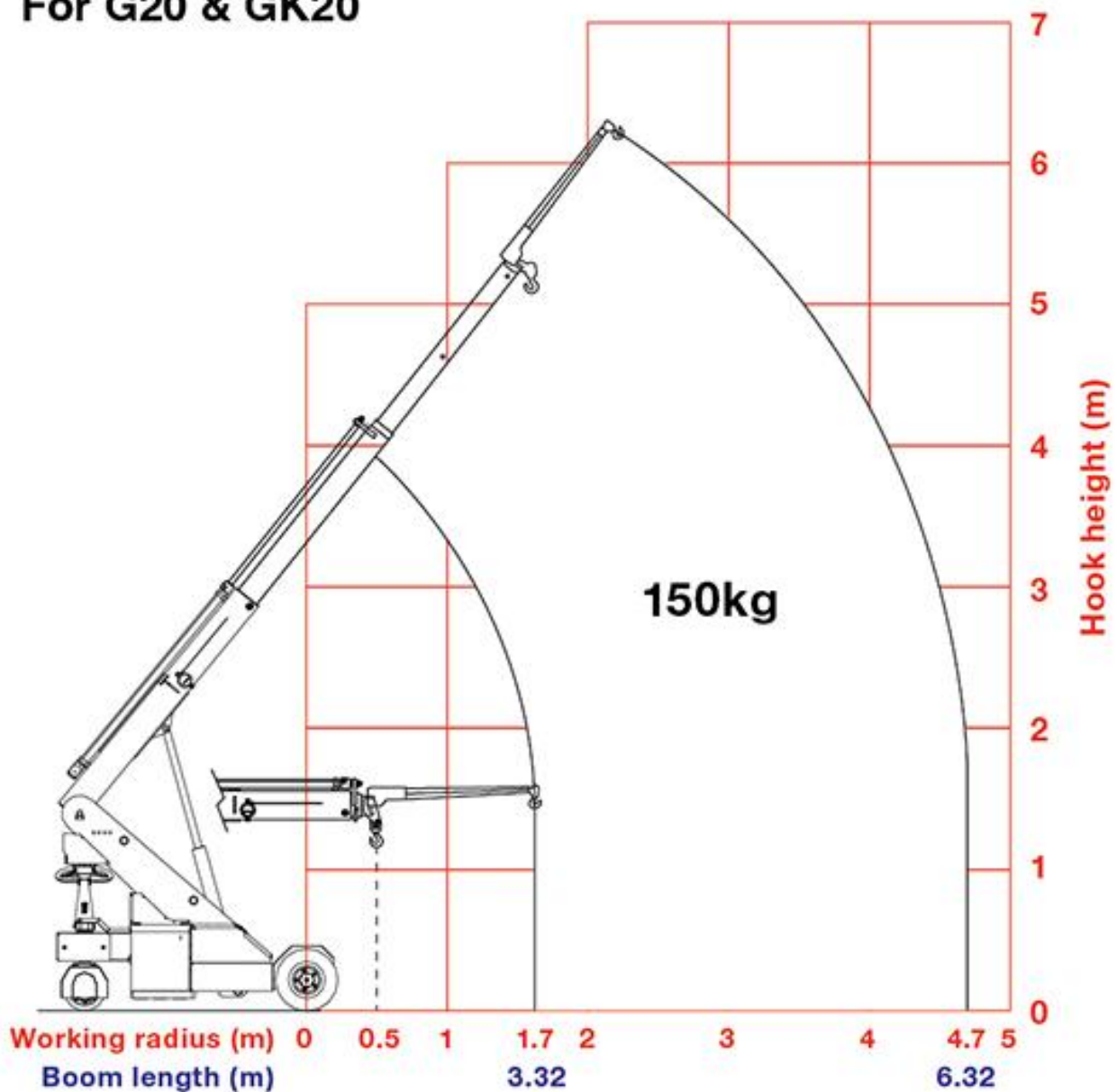


TRANSPORT – GRUE – DEMENAGEMENT INDUSTRIEL – MANUTENTION – LOCATION – ENTREPOSAGE



Tableau de charge : Avec fléchette de 1.2m.

Searcher Hook Rated Loads For G20 & GK20



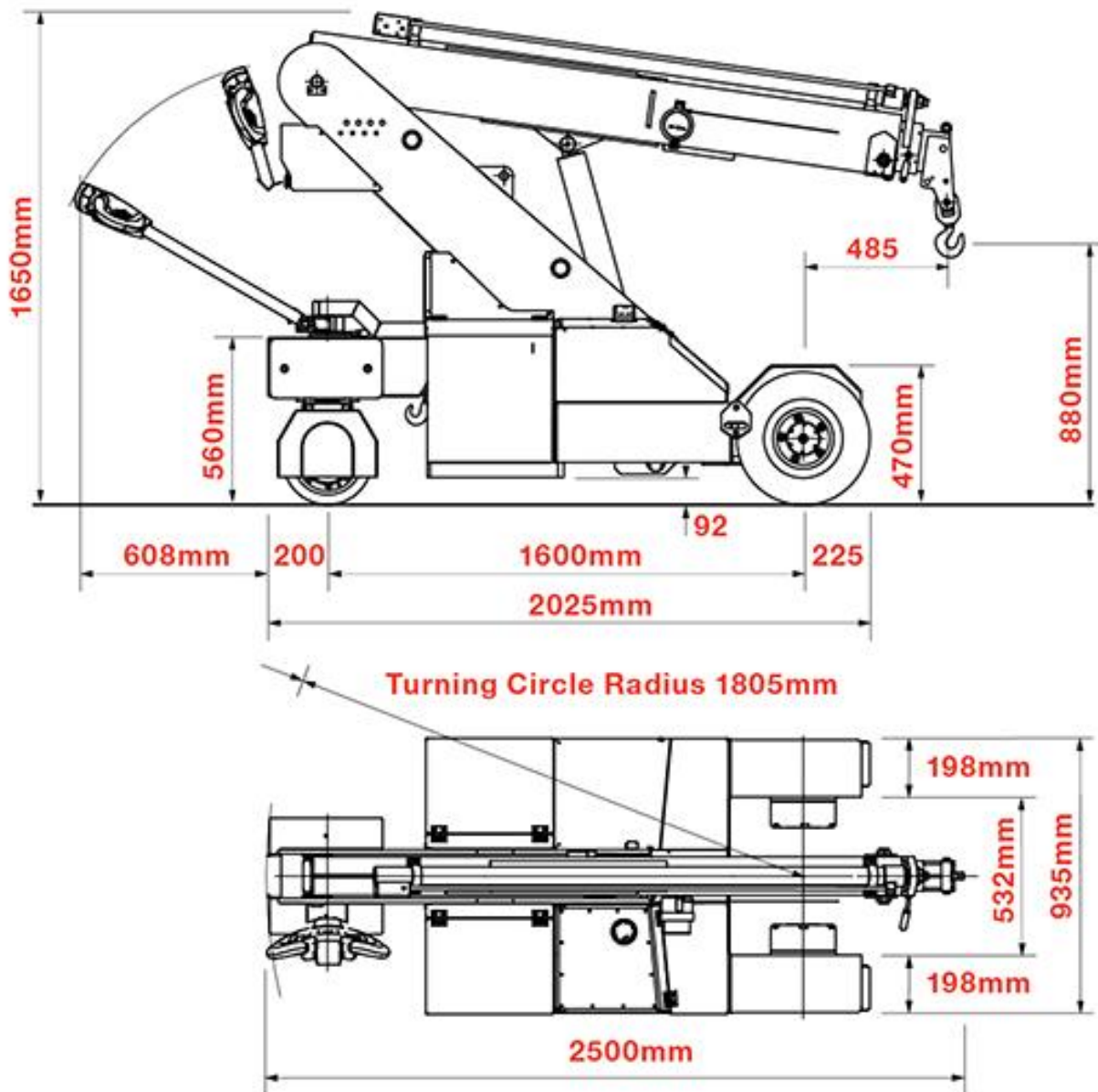


TRANSPORT – GRUE – DEMENAGEMENT INDUSTRIEL – MANUTENTION – LOCATION – ENTREPOSAGE



Dimensions de la grue / Poids 2000kg

Technical Data (approx. mm)





TRANSPORT – GRUE – DEMENAGEMENT INDUSTRIEL – MANUTENTION – LOCATION – ENTREPOSAGE

Technical Specifications

Capacity	2.0t x 0.5m
Maximum working radius	3.5m (4.7m with searcher hook)
Maximum lifting height	5.3m (6.32m with searcher hook)
Dimensions	2500mm (l) x 935mm (w) x 1650mm (h)
Weight	2000kg
Boom length	2.15 - 5.15m
Boom type	3 section box boom (1+2 hydraulic, 3 manual)
Derricking angle	-6° to 50°
Steering	rear 180°
Tyres	1 solid rear, 2 solid front
Power source	24v rechargeable battery
Battery charger	110v
Travel speed	3km/h
Gradeability	±9° (without load)
Standard equipment	Digital safe load indicator, audio-visual overload alarm, reversing alarm, overload warning lamps, work lamp
Optional equipment	Low marking tyres, full winch system (1650kg), radio remote control, electromagnetic front brakes, 150kg searcher hook, 800kg rhino hook





© The GGR Group Ltd

